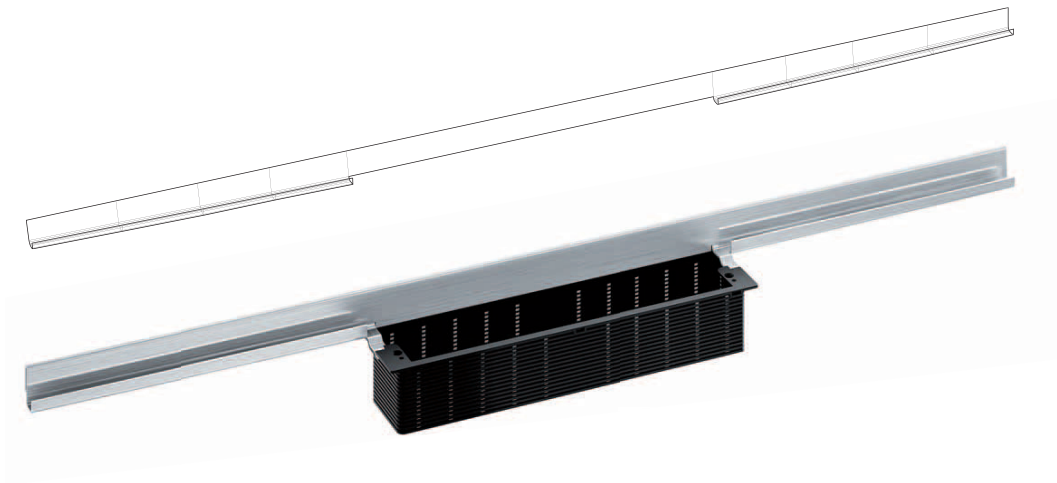


CeraWall Individual. The 'barely there' shower channel discretely placed in the wall/floor joint.





CeraWall Individual



CeraWall Individual blends perfectly

Integrated within the narrow wall-floor joint, this shower channel is almost invisible.

65 mm

90 mm

Installation height

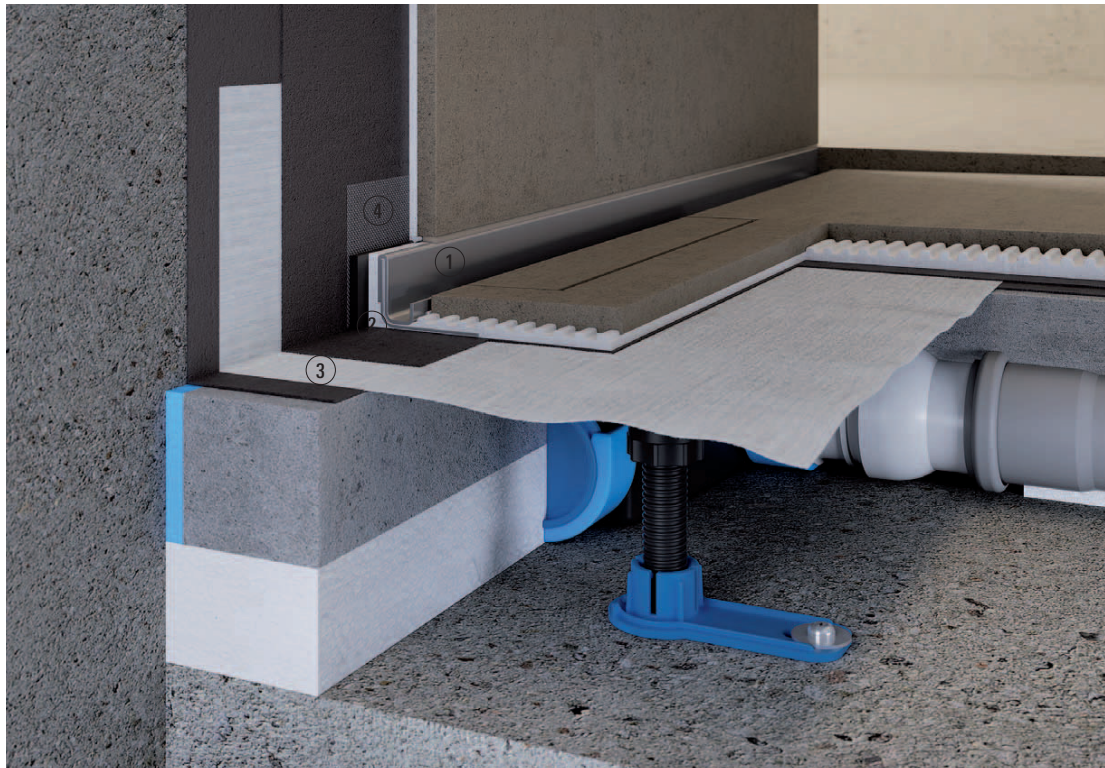
Very simple cleaning

Lengths can be adjusted

Position in the shower

No sloped side sections

Cover plates		Design		Natural stone	
<div>Individual</div> <div>For flooring with unfinished cut edges (e.g. glazed tiles)</div>		<div>All-purpose design in stainless steel, not to be tiled</div>		<div>For flooring with polished cut edges or through-dyed flooring (e.g. natural stone or porcelain stoneware)</div>	
<div>Satin stainless steel</div>		<div>PVD-coated, anthracite, matt</div>		<div>PVD-coated, rose gold, matt</div>	
				<div>PVD-coated, brass, matt</div>	



1. Stainless steel J-section
2. Void-free laying in the adhesive bed
3. Bonded waterproofing
4. Self-adhesive safety tape S 3 with cut-resistant stainless steel mesh and sound insulation



Our service for you:
installation video

At dallmer.de/en/videocenter/, you will find a video which clearly shows just how easy it is to install CeraWall.

Technical information

Build-in heights with DallFlex drain body:

65 mm or 90 mm

Build-in heights with DallFlex shower underlay:

from 85 mm

Drainage rates: 0.6 l/s – 1.6 l/s*







Suitable for floor and wall finish

of 12 – 24 mm (incl. adhesive bed),

(for CeraWall Individual N 24 – 32 mm)

Lengths: 800 – 2000 mm

* depending on the drain version and connection type

<p><u>How to select:</u></p> <p>CeraWall Individual shower channel</p> 	<p>Individual cover plate</p>  <p>or</p> <p>Design cover plate</p>  <p>or</p> <p>Natural stone cover plate</p> 	<p>DallFlex drain body</p>  <p>or</p> <p>DallFlex Wall shower underlay</p> 
--	--	---